

Case Study: Peninsula Medical School, Plymouth

044/May14



Kawneer curtain walling, windows and doors feature on £1.3million medical school

Designed by architects, Nightingale Associates, for main contractor, HBG Construction, Plymouth's Peninsula Medical School makes extensive use of Kawneer 1202 curtain walling, thermally enhanced windows and 190 doors, which were supplied and installed by Dudley's Architectural Aluminium.

Building: Peninsula Medical School

Location: Plymouth

Architect: Nightingale Associates

Main Contractor: HBG Construction

Installer: Dudley's Aluminium

WWW.KAWNEER.CO.UK

 **KAWNEER**
AN ARCONIC COMPANY

Kawneer contributes to medical school development

Featuring Kawneer 1202 curtain walling, thermally enhanced windows and 190 doors, Peninsula Medical School is a new-build medical teaching facility on the Tamar Science Park on the outskirts of Plymouth. The two-storey building comprises of a Clinical Skills Resource Centre, IT Suite, laboratory facilities, teaching seminar rooms, lecture theatre and academic offices.

Dudley's Architectural Aluminium were required to offer a complete façade solution to include larger areas of cedar cladding in addition to the glazed aluminium products, therefore the team were responsible for the design interfaces between the two. However, a major constraint of the development was that the project spanned a valley, which presented a variety of installation and access challenges and a difficult working environment due to the contours of the valley.

To address this challenge a double width scaffold design was agreed at the tender stage of the project between Dudley's and HBG Construction. Erected on the North and South elevations, approximately 130 metres in length spanning the valley, the outer scaffold incorporated the ties and braces, whilst the inner scaffold was left free from any obstructions, giving access to the main elevations for installation and material distribution. This type of scaffold assisted both the speed of the installation and also created a safer working environment.

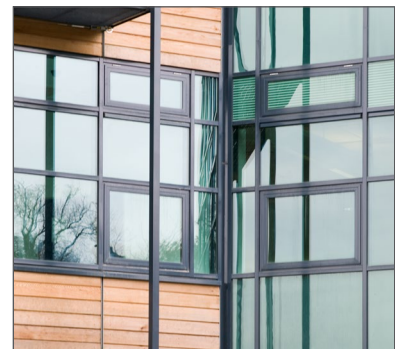
With Peninsula Medical School's coastal location, a gloss finish was provided to Kawneer's products with a minimum 60 micron paint finish and a marine environment guarantee providing long-term protection from the coastal climate.

The development also featured a two level Brise Soliel walkway installed to both the North and South elevations running the full length of the valley, partially supported by the curtain walling, through the nosing of the frame.

Graham Kingdon of HBG Construction commented: "Kawneer's systems were technically suitable for the location of the project, which spanned a valley, somewhat like a bridge. The biggest challenge was the site logistics, which required close coordination between trades and planning of the access requirements for the distribution of materials and labour across the valley.

"A scaffold solution was developed to allow this to happen in conjunction with Dudley's who supplied and installed the Kawneer systems.

"Overall, Kawneer provided both a technical and economic solution to a challenging project."



Please contact our Architectural Services Team if you have a project you would like to discuss: Tel: 01928 502604 / Email: kawneerAST@arconic.com

Kawneer UK Limited, Astmoor Road, Astmoor Industrial Estate, Runcorn, Cheshire WA7 1QQ
Tel: + 44 (0)1928 502500 Fax: + 44 (0)1928 502501

WWW.KAWNEER.CO.UK